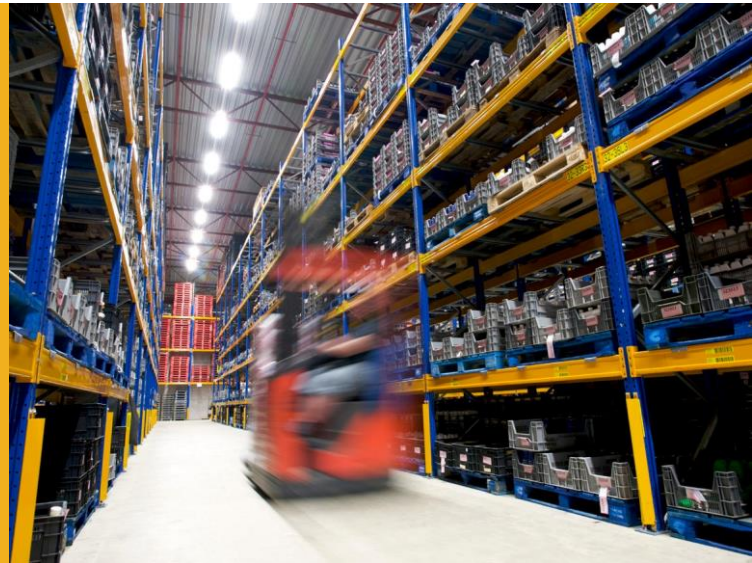


OPH-3001

Laser scanner

The OPH-3001 is a reliable, durable and affordable proprietary mobile computer with a vibrant color display. It features an elegant design and a high speed, integrated laser scanner that quickly and accurately scans barcodes.



Highlights

- Durable, reliable and affordable mobile terminal
- Ideal solution for asset management, inventory control and mobile sales automation
- Vibrant, TFT LCD QVGA color display with adjustable backlight
- Intuitive 22-key keyboard
- Integrated laser barcode scanner: 100 scans/second
- Features 4 MB Flashrom, 2 MB SRAM and 128 MB NAND Flash
- Communication and battery charging through mini USB 2.0, VCP
- Withstands 1.5 m drop to concrete
- Features IP54 rating – comprehensive sealing against dust and moisture
- Compact size and weight: 58.2 x 180.8 x 23.8 mm (W x H x D) and 156 grams
- Programmable: free Opticon SDK enables solution providers to create customized scanning solutions
- Backed by a two year warranty

OPH-3001

Product Specifications

Operation

CPU: 32-bit, 96 MHz

O/S: Proprietary

Software: Programmable in C-language.

Software development kit with compiler free downloadable

RTC: Supports year, month, day, hour, minute, second (leap year supported)

Memory

NAND Flash: 128 MB

Flashrom: 4 MB

SRAM: 2 MB

Display

Type: TFT LCD QVGA color display with backlight

Size: 2", 320 x 240 pixels

Operating indicators

Visual: 1 LED (red/green/orange)

Non-visual: Buzzer

Operating keys

Entry options: 21 keys total, 12 key (alpha)numeric keypad, 4 navigation keys, 3 function keys, 1 scan key, 1 esc key

Communication

USB: USB, ver. 2.0, VCP / MSD / HID

IRDA: Ver 1.2 physical layer, baudrate 1200 bps - 115.2 kbps

Power

Rechargeable battery: Lithium-Ion 3.7V 1100 mAh

Backup battery: Yes for RTC

Operating time: Ca. 40 hours (backlight off, 1 scan / 10 sec)

Data retention time: Indefinitely

Charging method: Enclosed USB cable

Barcode Scanner Optics

Light source: 650 nm visible laser diode

Scan rate: 100 scans / seconds

Reading pitch angle: $\pm 35^\circ$

Reading skew angle: -50 to -8° , $+8$ to $+50^\circ$

Reading tilt angle: $\pm 20^\circ$

Curvature: $R \geq 15$ mm (EAN8), $R \geq 20$ mm (EAN13)

Min. pcs value: 0.45

Depth of field at code 39:

60 - 120 mm (0.127 mm) /

2.36 - 4.72 in (5 mil),

50 - 150 mm (0.15 mm) /

1.97 - 5.91 in (6 mil),

50 - 260 mm (0.25 mm) /

1.97 - 10.24 in (10 mil),

50 - 260 mm (0.5 mm) /

1.97 - 10.24 in (20 mil),

70 - 650 mm (1.00 mm) /

2.76 - 25.59 in (39 mil)

Supported symbologies

Barcode (1D): JAN/UPC/EAN incl. add on, Codabar/NW-7, Code 11, Code 39, Code 93, Code 128, GS1-128 (EAN-128), GS1 Databar (RSS), IATA, Industrial 2of5, interleaved 2of5, ISBN-ISMN-ISSN, Matrix 2of5, MSI/Plessey, S-Code, Telepen, Tri-Optic, UK/Plessey
Postal Code: Chinese Post, Korean Postal Authority code

Durability

Temperature in operation: -10 to 50 °C / 14 to 122 °F

Temperature in storage: -20 to 60 °C / -4 to 140 °F

Charging temperature: 0 to 40 °C (32 to 104 °F)

Humidity in operation: 20 - 85% (non-condensing)

Humidity in storage: 20 - 85% (non-condensing)

Ambient light immunity: Fluorescent 4,000 lx max, direct sun 80,000 lx max, incandescent 4,000 lx max

Drop test: 1.5 m / 5 ft drop onto concrete surface

Protection rate: IP54

Physical

Dimensions (WxHxD): 58.2 x 180.8 x 23.8 mm / 2.29 x 7.12 x 0.94 in

Weight body: Ca. 156 g / 5.5 oz (incl. battery)

Regulatory & Safety

Product compliance: CE, FCC, RoHS, IEC60825-1 Class 2, FDA CDRH Class II, EN55022, EN55024

Items

Enclosed: Wrist strap, USB cable, standard battery

Sold Separately: Rechargeable battery

SIM is dedicated to run with the OPH 3001. Download your free version: [SIM Smart Inventory Manager: Simple and Smart Inventory Management Software](#)